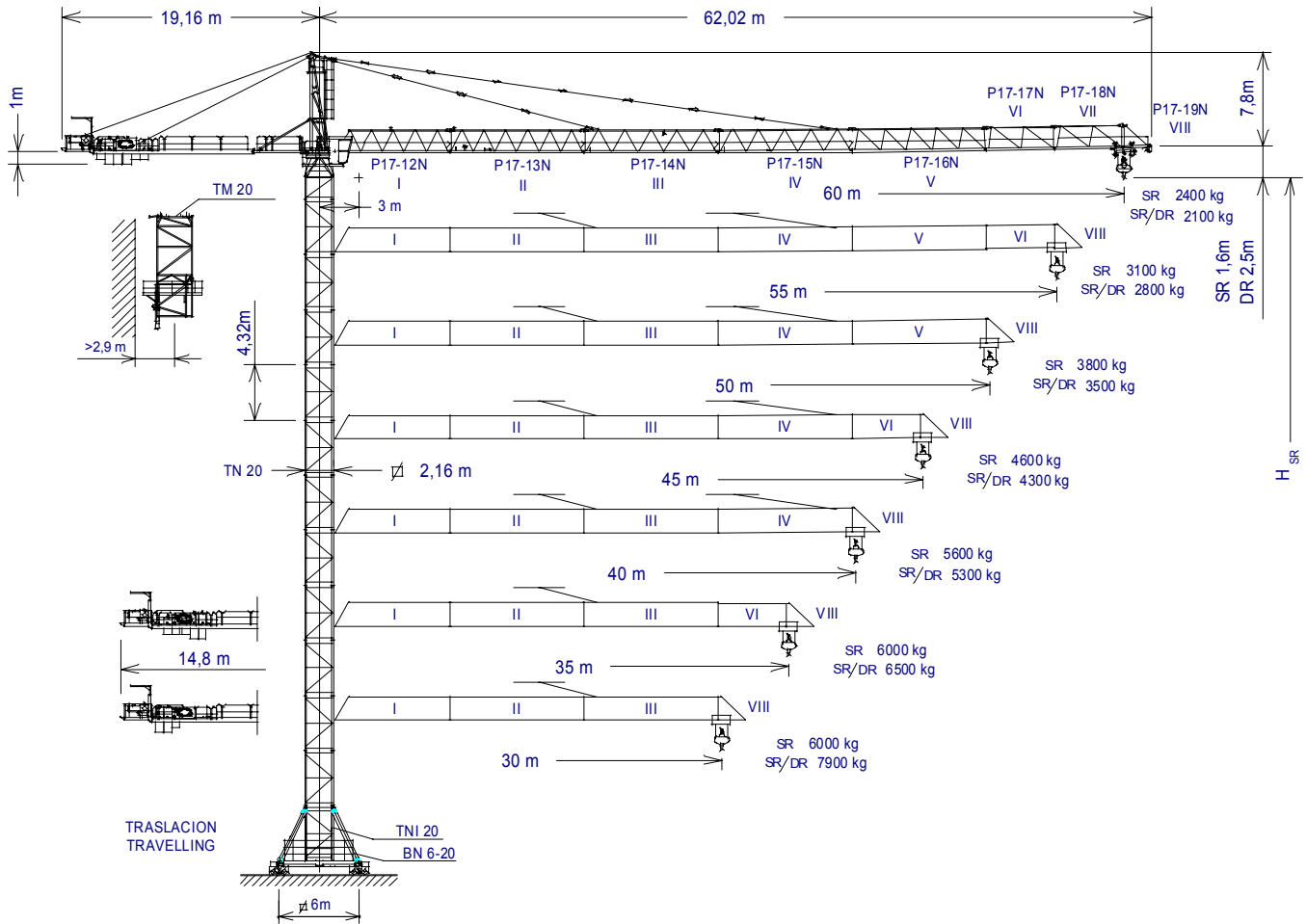


GRUA TORRE TOWER CRANE

J175B

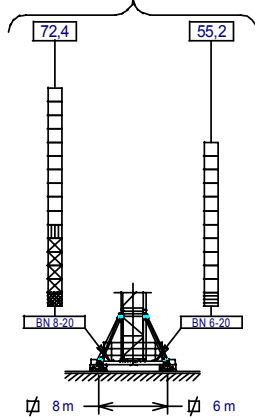
UNE 58-101-92
DIN 15018 H1 B3
Directivas de nivel de potencia acústica / Sound power level directives
84/534/CEE & 87/405/CEE
Directivas de máquinas / Machinery directives
89/392/CEE & 91/368/CEE

SISTEMA DE CALIDAD CERTIFICADO SEGUN
QUALITY ASSURANCE SYSTEM CERTIFIED ACCORDING TO
UNE-EN-ISO 9001 

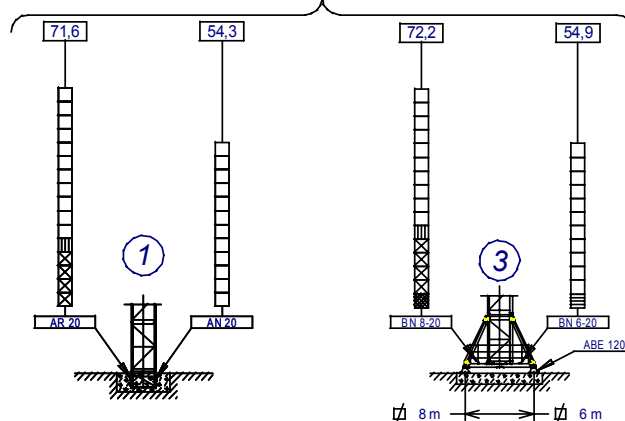


$H_{DR} = H_{SR} - 0,9$	P17-12N -----	136.40.700	TNI 20 -----	200.30.500
$H_{SR} =$ Altura máxima bajo gancho sin arriostrar (m)	P17-13N -----	136.41.700	TRI 20 -----	153.30.000
Maximum height under hook without fastening	P17-14N -----	136.42.500	TM 20 -----	142.35.000
	P17-15N -----	136.43.500	BN 6-20 -----	200.20.000
	P17-16N -----	136.44.500	BTX 80 / BEX 80 -----	153.20.000
	P17-17N -----	136.45.500	AR 20 -----	136.21.500
	P17-18N -----	136.46.500	AN 20 -----	136.21.000
	P17-19N -----	136.47.500	ABE 120 -----	142.23.000

(H_{SR}) TRASLACION / TRAVELLING



(H_{SR}) ESTACIONARIA / STATIONARY




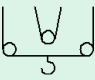
-  TN 20
-  TR 20 A
-  TR 20
-  TNI 20
-  TRI 20



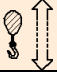
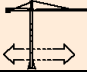
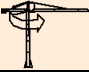
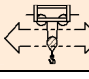



JASO EQUIPOS DE OBRAS Y CONSTRUCCIONES, S.L.

Fecha / Date: 04-08-04 - Reservado el derecho a modificaciones sin previo aviso / Subject to modification, without previous warning

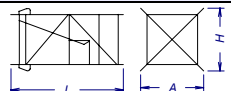
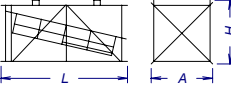
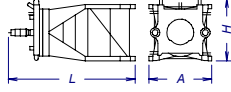
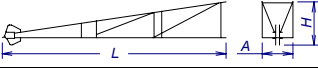
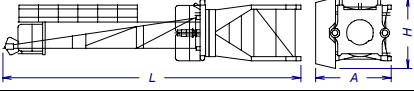
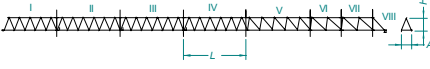
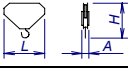
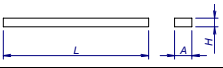
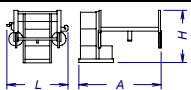
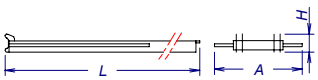
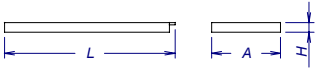
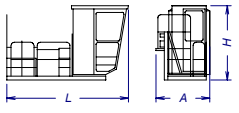
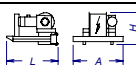
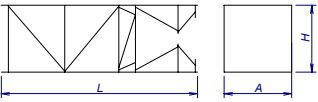
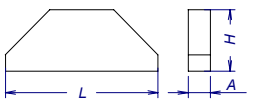
		Cargas máximas / Maximum loads SR - 6000						6000 kg a
SR (kg)	Alcance del gancho (m) / Hook reach (m)							
PLUMA JIB	60	55	50	45	40	35	30	
60 m	2400	2680	3020	3430	3950	4610	5495	27,7 m
55 m	—	3100	3480	3945	4525	5270	6000	31,2 m
50 m	—	—	3800	4300	4925	5725	6000	33,6 m
45 m	—	—	—	4600	5260	6000	6000	35,6 m
40 m	—	—	—	—	5600	6000	6000	37,6 m
35 m	—	—	—	—	—	6000	6000	35 m
30 m	—	—	—	—	—	—	6000	30 m

		Cargas máximas / Maximum loads SR/DR - 6000/12000								6000/12000 kg a
SR / DR (kg)	Alcance del gancho (m) / Hook reach (m)									
PLUMA JIB	60	55	50	45	40	35	30	25	20	
60 m	2100	2400	2755	3195	3740	4440	5380	6000/6690	6000/8655	27,4/14,9 m
55 m	—	2800	3200	3685	4290	5075	6000/6115	6000/7575	6000/9760	30,5/16,6 m
50 m	—	—	3500	4020	4670	5505	6000/6620	6000/8180	6000/10515	32,6/17,7 m
45 m	—	—	—	4300	4985	5865	6000/7040	6000/8680	6000/11150	34,3/18,7 m
40 m	—	—	—	—	5300	6000/6225	6000/7460	6000/9185	6000/11780	36,1/19,7 m
35 m	—	—	—	—	—	6000/6500	6000/7780	6000/9570	6000/12000	35/20,4 m
30 m	—	—	—	—	—	—	6000/7900	6000/9715	6000/12000	30/20,7 m

CARACTERISTICAS DE MECANISMOS / MECHANISMS FEATURES

MECANISMOS MECHANISMS	*opcional *optional									
	EJ4850		* EJ6070VFG		TGJ2020VF	OR2207VF	TCM7105VF	TH2006		
kW	35		44,1		2 x 7,3	3 x 5,5	5,5	15		
VELOCIDADES SPEEDS	SR 3000 kg 6000 kg	50 / 25 / 6 m/min 25 / 6 m/min	SR 2100 kg 3500 kg 6000 kg	0...18/18...36/36...70 m/min 0...18/18...36/36...52 m/min 0...18/18...36 m/min	0...20 m/min	0...0,2 0,2...0,35 0,35...0,7 r/min sl/min	6000 kg 0...105 m/min 12000 kg 0...52 m/min	0,6 m/min		
Máx. recorrido gancho Maximum hook course	DR 6000 kg 12000 kg	25 / 12,5 / 3 m/min 12,5 / 3 m/min	DR 4200 kg 7000 kg 12000 kg	0...9/9...18/18...35 m/min 0...9/9...18/18...26 m/min 0...9/9...18 m/min		380/415V 50Hz	Potencia necesaria con ... Power required with ... EJ 4850 = 71,6 kW EJ 6070 VFG = 80,7 kW			
		SR 158m 346m	3 capas / layers 6 capas máx. / max. layers				440V 60Hz	Potencias y velocidades: 20% más Powers and speeds: 20% more		



DENOMINACION / DENOMINATION		L (m)	A (m)	H (m)	P / W (kg)	
Torre inferior <i>Lower tower</i>	TNI 20		4,475	2,504	2,504	3310
Torre <i>Tower</i>	TN 20		4,475	2,201	2,281	2705
	TR 20		4,575	2,161	2,261	3548
	TR 20 A		4,473	2,161	2,261	3504
Torre asiento pista, base punta torre y orientación <i>Slewing table, tower head base and slewing mechanism</i>			4,887	2,441	2,38	5425
Punta de torre <i>Tower head</i>			7,661	1,225	1,525	2550
Conjunto asiento pista, punta de torre y orientación <i>Slewing table assembly, tower head and slewing mechanism</i>			11,593	2,889	2,72	9045
Tramo de pluma <i>Jib section</i>	P17-12N (I)		8,701	1,74	2,13	1655
	P17-13N (II)		10,176	1,6	2,002	1715
	P17-14N (III)		10,178	1,6	1,997	1550
	P17-15N (IV)		10,169	1,6	1,965	1580
	P17-16N (V)		10,169	1,6	1,885	1442
	P17-17N (VI)		5,279	1,6	1,885	721
	P17-18N (VII)		5,279	1,6	1,885	506
	P17-19N (VIII)		2,222	1,74	2,195	340
Polipasto <i>Hook assembly</i>	SR		0,99	0,235	0,881	240
	DR		1,04	0,265	1,82	475
Tirante sostén pluma <i>Jib support tie</i>	2 tirantes / 2 ties		5,092	0,6	0,476	1292
	1 tirante / 1 tie		4,975	0,6	0,235	581
Carro <i>Crab</i>	SR		1,765	2,402	1,569	400
	DR		2,04	2,42	1,541	585
Contrapluma con plataformas <i>Counterjib with platforms</i>			12,128	2,984	0,58	2540
Prolongación contrapluma con plataforma <i>Counterjib extension with platform</i>			4,295	1,75	0,336	620
Plataforma y cabina <i>Platform and cabin</i>			3,759	1,65	2,338	820
Soporte y elevación <i>Support and hoisting</i>	EJ4850		2,374	2,315	2	2252
	EJ6070VFG		2,374	2,315	1,520	3945
Torre de montaje <i>Jacking cage</i>			8,15	2,808	2,772	3590
Lastre <i>Ballast</i>			3,8	0,58	1,5	6000

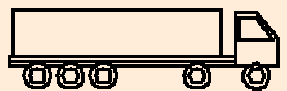


TORRES / TOWERS	ALTURA / HEIGHT	Diagrama de la torre				ALTURA / HEIGHT	TORRES / TOWERS
1	6,80	TN 20	TN 20	TN 20	136.31.000	6,80	1
2	11,12	TND 20	TND 20	TND 20	136.31.500	11,12	2
3	15,44					15,44	3
4	19,76					19,76	4
5	24,08					24,08	5
6	28,40					28,40	6
7	32,72					32,72	7
8	37,04					37,04	8
9	41,36					41,36	9
10	45,68					45,68	10
11	50,00			TR 20 A	136.30.400	50,00	11
12	54,32			TRD 20 A	136.30.800	54,32	12
13	58,64	AN 20 AND 17/20/23 ANDC 17/20/23		TR 20	136.30.000	58,64	13
14	62,96			TRD 20	136.30.500	62,96	14
15	67,28			TR 23	142.30.000	67,28	15
16	71,60			TRD 23	142.30.500	71,60	16
		AN 20 AND 17/20/23 ANDC 17/20/23		AR 20	136.21.000	77,42	17
				ARD 17/20/23 ARDC 17/20/23	142.21.800		
				AR 20	142.21.700		
				ARD 17/20/23	136.21.500		
				ARDC 17/20/23	142.21.900		
				AR 23	142.21.600		
				ARD 17/20/23 ARDC 17/20/23	142.21.500		

Transporte grúa auto estable con traslación de 6x6m. y sin lastre

Free standing crane transport with travelling base of 6x6m. without base ballast

En camiones / In trucks



6 unidades / 6 units

En contenedores / In containers

BOX

7 unidades / 7 units

FLAT RACK

Ancho 2,6m
2,6m wide

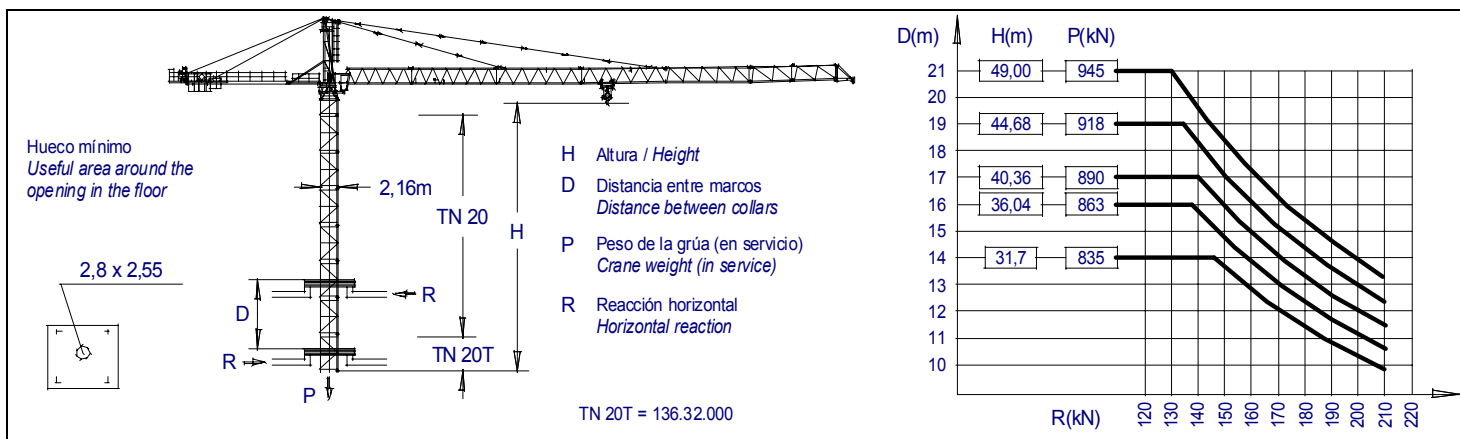
1 unidad / 1 unit

Las configuraciones de torre representadas son recomendaciones de montaje que pueden ser utilizadas en cualquier instalación. Cada tramo de torre, en la posición indicada, puede asimismo ser utilizado como elemento inferior de torre en grúa autoestable estándar con su correspondiente altura bajo gancho.

Configuraciones de torre para mayores alturas bajo gancho o con diferentes tramos de torre no representadas aquí, pueden ser también posibles aunque deben ser verificadas y confirmadas por escrito por nuestro departamento técnico en cada caso individual y antes de que empiece la instalación de la grúa.

The represented tower configurations are assembly recommendations that can be used in any installation. Each tower section in its indicated position can also be used as the lower element of the mast tower in standard freestanding crane with its corresponding height under hook.

Tower configurations not shown here, with greater heights under hook or with different tower sections, are also possible but must be checked and confirmed in writing by our technical department in every individual case and before crane installation starts.



JASO EQUIPOS DE OBRAS Y CONSTRUCCIONES, S.L

Ctra./Rd. Madrid - Irún Km. 415
20.213 IDIAZABAL (Gipuzkoa)
ESPAÑA / SPAIN
P.O. Box, 23 - 20.200 BEASAIN

Tel. +34 943 - 18 70 00
Fax. +34 943 - 18 70 20
E-mail: jaso@jaso.com
http://www.jaso.com

Fecha / Date: 04-08-04

Reservado el derecho a modificaciones sin previo aviso / Subject to modification, without previous warning

DELEGACION / DELEGATION