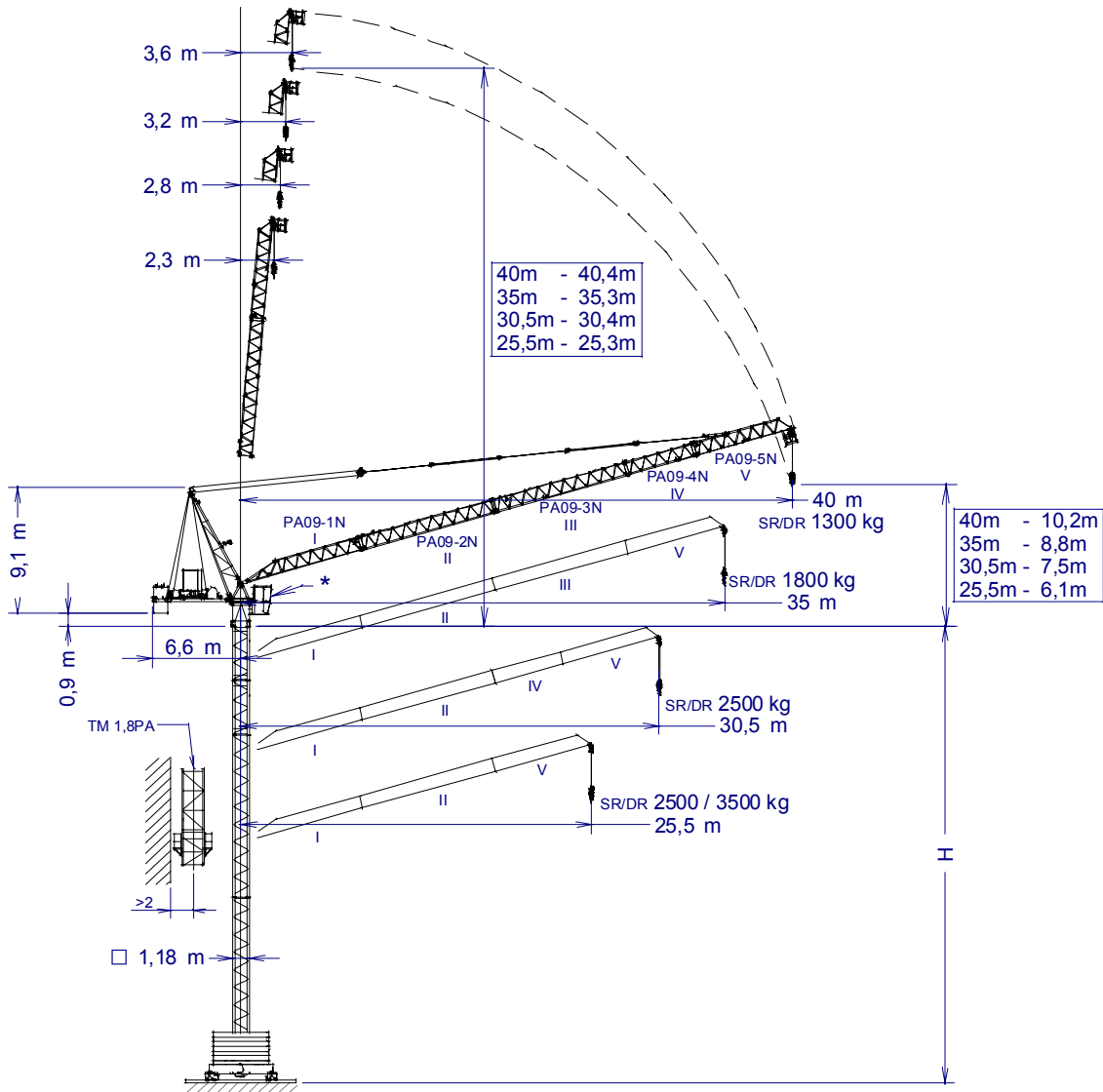


GRUA TORRE TOWER CRANE

J80PA

De acuerdo con UNE 58-101-92 According to FEM 1001-87
 Directivas de nivel de potencia acústica / Sound power level directives 84/534/CEE & 87/405/CEE
 Directivas de máquinas / Machinery directives 89/392/CEE & 91/368/CEE

SISTEMA DE CALIDAD CERTIFICADO SEGUN
 QUALITY ASSURANCE SYSTEM CERTIFIED ACCORDING TO
UNE-EN-ISO 9001

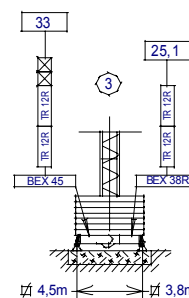
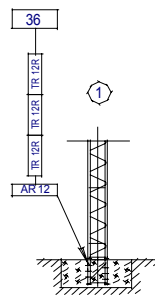
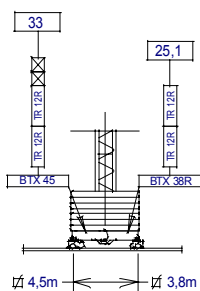


*Opcional Optional	PA09-1N -----	202.40.000	BTX 45 / BEX 45 -----	137.20.500
	PA09-2N -----	202.41.000	BTX 38R / BEX 38R --	137.20.000
	PA09-3N -----	202.42.000	AR 12 -----	137.21.000
	PA09-4N -----	202.43.000	TM 1,8PA -----	202.35.000
	PA09-5N -----	202.44.000		

(H) TRASLACION / TRAVELLING

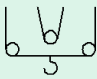
(H) ESTACIONARIA / STATIONARY

TR 4R




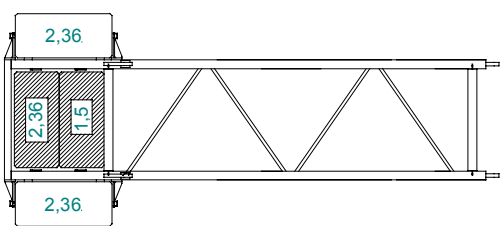
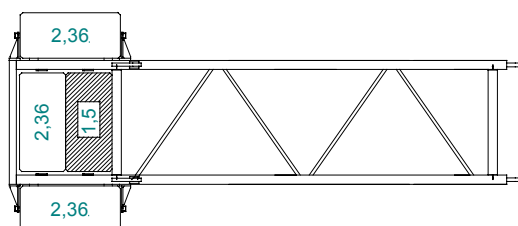
JASO EQUIPOS DE OBRAS Y CONSTRUCCIONES, S.L.

Fecha / Date: 03-06-03 - Reservado el derecho a modificaciones sin previo aviso / Subject to modification, without previous warning

		SR / DR (kg)	Cargas máximas / Maximum loads ²⁵⁰⁰ / ₅₀₀₀ kg				2500 / 5000 kg a
PLUMA JIB	Alcance del gancho (m) / Hook reach (m)						
		40	35	30,5	25,5	20	
40 m	1300	1750	2350	2500 / 3150	2500 / 4400	29 / 18,3	m
35 m	—	1800	2400	2500 / 3220	2500 / 4430	29,3 / 18,3	m
30,5 m	—	—	2500 / 2500	2500 / 3400	2500 / 4640	30,5 / 18,9	m
25,5 m	—	—	—	2500 / 3500	2500 / 4860	25,5 / 19,6	m

CONTRAPESOS / COUNTERWEIGHTS

 Montaje pluma
Jib fitting-up

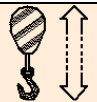
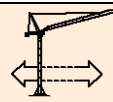
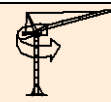
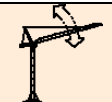
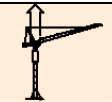

PLUMA / JIB	40 - 35 m	30,5 - 25,5 m
8,58 t 3 x 2,36 t 1 x 1,5 t		

LASTRES INFERIORES / LOWER BALLASTS

Para alturas intermedias tomar el lastre correspondiente a la altura superior
For intermediate heights take the ballast corresponding to the higher height

Altura (m) / Height (m)		33	25	17	9	
Número de piedras a colocar Number of ballast blocks to put	Piedras de 4100 kg Blocks of 4100 kg	BEX 45 / BTX 45	14	12	10	8
		BEX 38R / BTX 38R	-	14	12	10

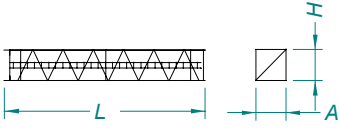
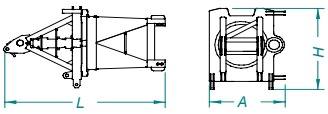
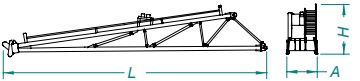

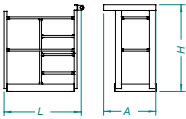
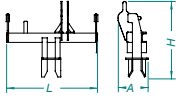
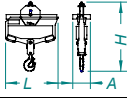
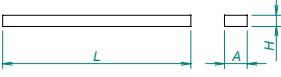

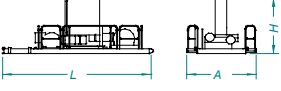
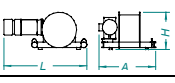
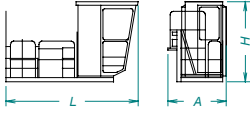
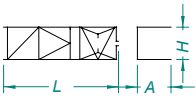

CARACTERISTICAS DE MECANISMOS / MECHANISMS FEATURES

MECANISMOS MECHANISMS	*opcional *optional							
	EM2566VF		*EM33100VF		<input type="checkbox"/> 3,8m TGM825VF <input type="checkbox"/> 4,5m TGM825LVF	OR608VF	EPM2515VF	TH1010
kW	18,4		24,2		2 x 2,94	4	18,4	7,4
VELOCIDADES SPEEDS	SR 775 kg 1250 kg 2500 kg	0...4...16...33...51...66 m/min 0...4...16...33...51 m/min 0...4...16...33 m/min	SR 775 kg 1250 kg 2500 kg	0...6...25...50...75...100 m/min 0...6...25...50...75 m/min 0...6...25...50	0...25 m/min	0...0,4 0,4...0,8 r/min sl/min	1,5 min	1 m/min
	DR 1550 kg 2500 kg 5000 kg	0...2...8...16,5...25,5...33 m/min 0...2...8...16,5...25,5 m/min 0...2...8...16,5 m/min	DR 1550 kg 2500 kg 5000 kg	0...3...12,5...25...37,5...50 m/min 0...3...12,5...25...37,5 m/min 0...3...12,5...25 m/min				
Máx. recorrido gancho Maximum hook course	SR 142m 246m	3 capas / layers 5 capas máx. / max. layers	DR 71m 123m	3 capas / layers 5 capas máx. / max. layers		400V 50Hz	Potencia necesaria con ... Power required with ... EM2566VF = 46,7 kW EM33100VF = 52,5 kW	

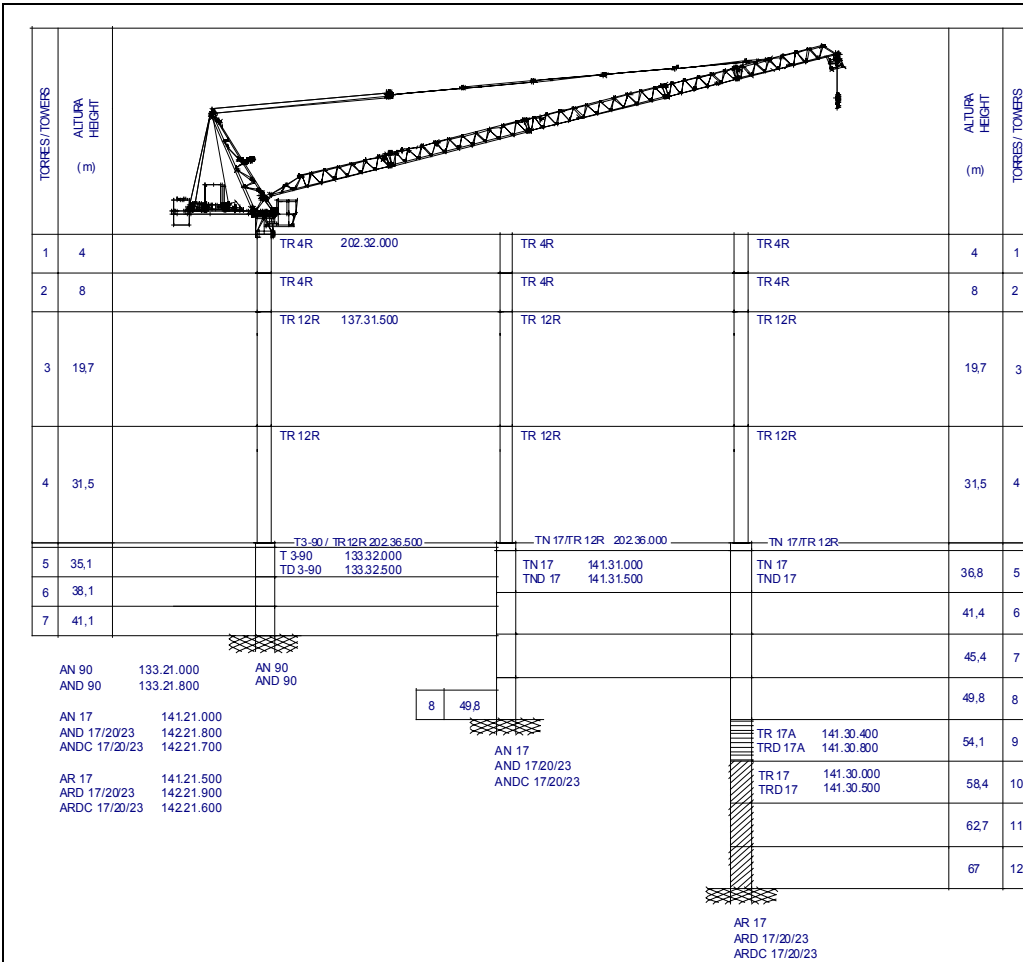
Importante: A medida que la altura bajo gancho aumenta, disminuye la capacidad de carga de la grúa. Parar alturas superiores a la autoestable consultar a JASO EQUIPOS DE OBRAS Y CNES, S.L.

Important: When the height under hook increases, the hoisting load will decrease. If the height under hook is higher than the free standing height, consult to JASO EQUIPOS DE OBRAS Y CNES, S.L.



DENOMINACION / DENOMINATION			L (m)	A (m)	H (m)	P / W (kg)
Torre Tower	TR 8R		8,07	1,19	1,19	2575
	TR 12R		12,01	1,19	1,19	3715
	TR 4R		4,15	1,19	1,19	1430
Torre asiento pista, base punta torre y orientación Slewing table, tower head base and slewing mechanism			3,413	1,609	1,950	2390
Punta de torre Tower head			8,358	0,968	1,557	1490
Tramo pluma Jib section	PA09-1N (I)		9,305	0,860	0,995	866
	PA09-2N (II)		10,115	0,860	0,995	687
	PA09-3N (III)		10,115	0,860	0,995	684
	PA09-4N (IV)		5,220	0,860	0,995	276
	PA09-5N (V)		7,466	0,860	0,995	488
Plataforma de punta de pluma Jib end platform			1,036	0,7	1,18	26
Punta pluma Jib end			0,81	0,266	0,679	50
Polipasto Hook assembly			0,8	0,267	1,105	217
Tirante sostén pluma Jib support tie			5,1	0,36	0,3	255
Contrapluma con plataformas Counterjib with platforms			5,595	2,565	0,245	800
Contrapluma con plataformas, armario eléctrico y mecanismos Counterjib with platforms, electric control cupboard and mechanisms			5,595	2,565	2,272	3100
Mecanismos Mechanisms	Elevación carga / Hoisting Elevación pluma / Luffing		1,93	1,318	0,845	1185
			1,9	1,247	0,758	901
Plataforma y cabina Platform and cabin			3,759	1,65	2,338	820
Torre de montaje Jacking cage			7,14	1,76	1,71	3165
Lastre Ballast			4	0,34	2,1	4100

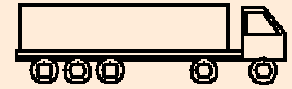




Transporte grúa auto estable con traslación □ 4,5m. y sin lastre

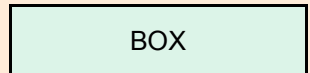
Free standing crane transport with travelling base □ 4,5m. without base ballast

En camiones / In trucks

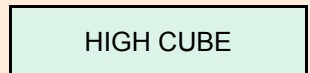


2 unidades / 2 units

En contenedores / In containers



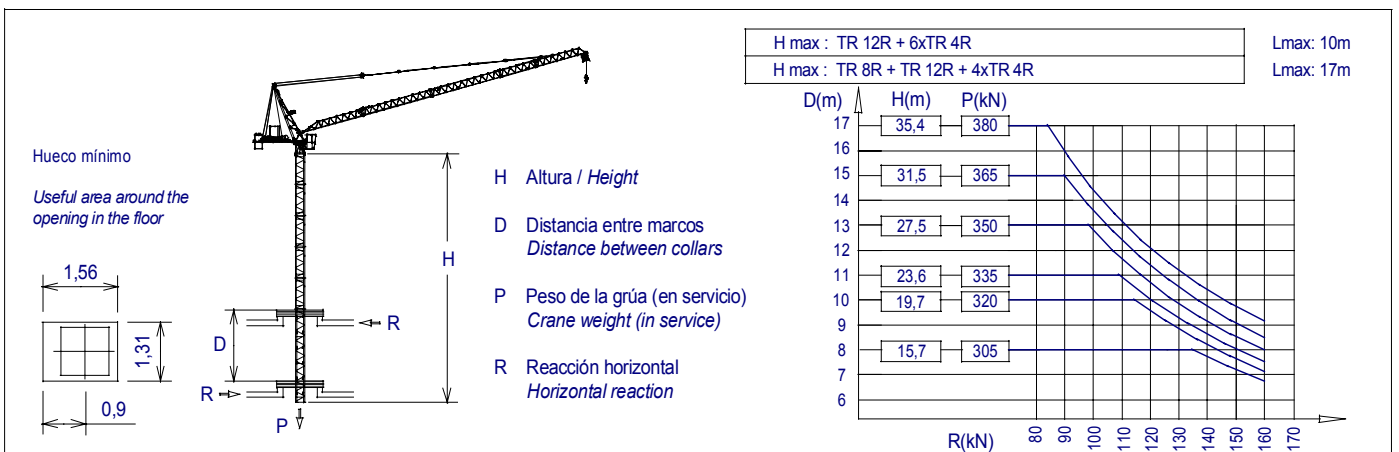
1 unidad / 1 unit



1 unidad / 1 unit

Las configuraciones de torre representadas son recomendaciones de montaje que pueden ser utilizadas en cualquier instalación. Cada tramo de torre, en la posición indicada, puede asimismo ser utilizado como elemento inferior de torre en grúa autoestable estándar con su correspondiente altura bajo gancho. Configuraciones de torre para mayores alturas bajo gancho o con diferentes tramos de torre no representadas aquí, pueden ser también posibles aunque deben ser verificadas y confirmadas por escrito por nuestro departamento técnico en cada caso individual y antes de que empiece la instalación de la grúa.

The represented tower configurations are assembly recommendations that can be used in any installation. Each tower section in its indicated position can also be used as the lower element of the mast tower in standard freestanding crane with its corresponding height under hook. Tower configurations not shown here, with greater heights under hook or with different tower sections, are also possible but must be checked and confirmed in writing by our technical department in every individual case and before crane installation starts.



JASO EQUIPOS DE OBRAS Y CONSTRUCCIONES, S.L.

Ctra./Rd. Madrid - Irún Km. 415
20.213 IDIAZABAL (Gipuzkoa)
ESPAÑA / SPAIN
P.O. Box, 23 - 20.200 BEASAIN
Tel. +34 943 - 18 70 00
Fax. +34 943 - 18 70 20
E-mail: jaso@jaso.com
http://www.jaso.com

Fecha / Date: 03-06-03

Reservado el derecho a modificaciones sin previo aviso / Subject to modification, without previous warning

DELEGACION / DELEGATION